

Document authenticity verification device Regula 4103



The device is intended for express authenticity verification of passports, ID cards, travel documents, visa stamps and seals, including but not limited to entry permits, driver's licenses, vehicle registration certificates and other vehicle related documents, banknotes, revenue and special stamps, securities and other documents with security features.

The device is designed as a single unit for desktop use in a plastic body. Light sources for different examination modes are activated with the help of control buttons located in front of the object stage. A measuring scale on the light transmitting screen should be used for measuring sizes of examined objects. Product design provides a possibility to place a 10x magnifier [Regula 100X](#) and a torch right on the device body.

Functionality

- Detection of security features with magnetic properties
- **Examinations on different levels**
 - **protection of the document basis**
 - paper opacity, watermarks, security fibers, planchetes, security threads, foil stamping, pole feature, all types of windows, transparent vanish coating, shadow images, etc.
 - **printing methods**
 - *intaglio*: texts, guilloche frames, rosettes and vignettes, microprinting, latent images and moire patterns, signs for the visually impaired, blind embossing, colour shifting ink, including OVI with embossing and latent images, etc.
 - *letterpress*: serial numbers, texts, barcodes, etc.
 - *offset printing* including Orlov and rainbow printing: texts, microprinting, moire patterns, background and anti-copy patterns, etc.
 - *screen printing*: security features with optically variable effects, etc.
 - see-through register
 - perforation
 - **physicochemical protection**
 - UV luminescence with different wavelength
 - **complex security features**
 - special polymer coating of security laminates
 - metallized coating
 - laser engraving
- **Additional examination of**
 - document alterations such as erasure, etching etc.
 - traces of signature forgery
 - document mechanical defects such as cuts, tears, folds, etc.

Application

- Border control and immigration services
- Customs authorities
- Financial institutions
- Other agencies and organizations authorized to check documents

Delivery set

- Optical module with 3,5x and 7x magnification for **Regula 4103**
- Magnifier [Regula 1001M](#)
- Torch for **Regula 4103**
- Optionally:
 - Magnifiers [Regula 1002M](#); [1003M](#); [1004M](#)

Functionality			Model			
			4103	4103.01	4103.02	4103.03
Light sources	white	top	+			
		oblique	+	+	+	+
		bottom	+	+	+	+
		external oblique	+			
	ultraviolet, nm	254			+	+
		313				+
		365	+	+	+	+
Detection of security features with magnetic properties			+	+	+	+
Optical module			+			

Optical module magnification, times:

- main lens — 3,5
- system of two lenses — 7

Maximum document size, mm — 210×300 (A4)

Dimensions (length×width×height), mm — 280×190×180

Weight, kg — 1,9

Power supply, V — 12

Power consumption, W, max — 18



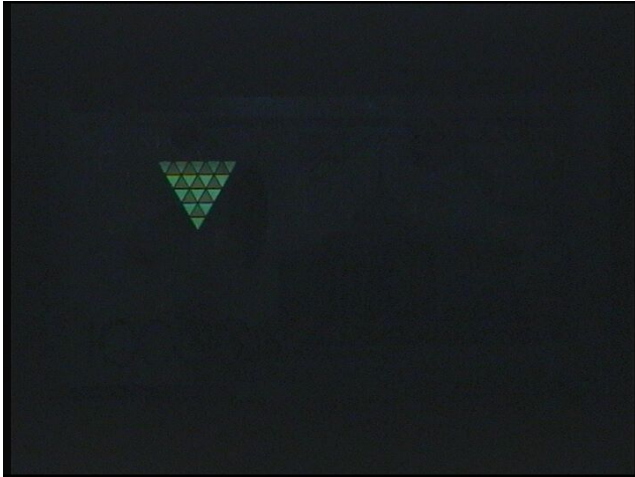
White top light



White oblique light



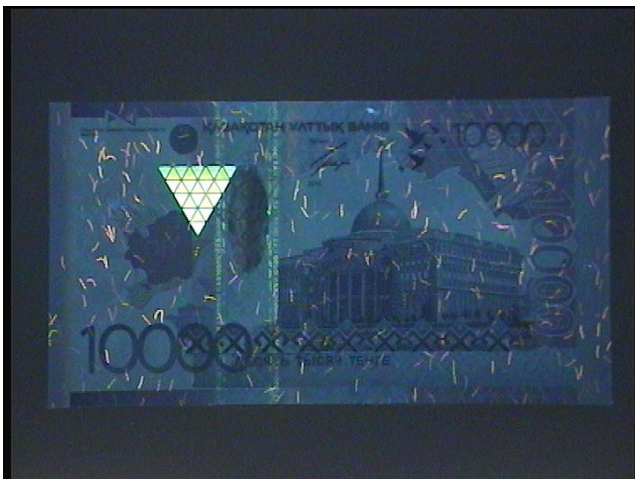
White bottom light



Ultraviolet top light (254 nm)



Ultraviolet top light (313 nm)



Ultraviolet top light (365 nm)